

Kosovo Route 6 Motorway Project Ministry of Infrastructure Kosovo

Location: Kosovo

Date: Sept. 2017 – Present

Structure: Slope Support for Motorway

Length: 60km Total

Geology: Varying weathered Gneiss and marble

Cost: Est. €650m

Client: Bechtel Enka GP JV

Owner: Ministry of Infrastructure, Kosovo



Figure 1. Drone picture showing landslide (courtesy BEGP).

Slope Support Consultancy Work:

The Kosovo Route 6 Motorway Project is a 60km long motorway stretching from Pristina to Kosovo's southern border with North Macedonia. Construction is currently being completed. The motorway follows along steep hills and valleys formed of gneiss and marble. The gneiss in particular ranges from medium to completely weathered. The residual soils, in combination with high water saturation, are prone to many slope stability issues in vicinity of the motorway, but also at slopes where no construction has taken place.

Gall Zeidler Consultants (GZ) are acting as consultants on the project to independently review slope stability scenarios and support measures and to provide recommendations and concepts. This included analyses of embankments, pile walls, anchored slope supports and bridge pier protections. The services also include site visits, review and optimization of existing and designed slope support for optimization and improvement, optioneering, potential failure analyses, and analyses of existing slope failures.

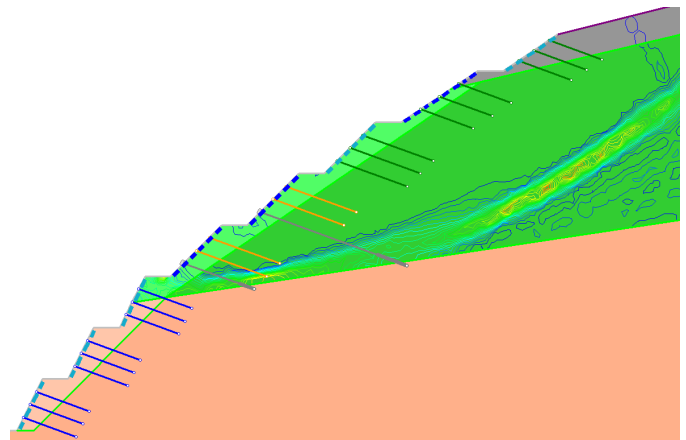


Figure 2. FEA model to assess potential deep and shallow slope failures.